



## Community Solar Energy

### About Us

Camphill Milton Keynes is a Voluntary and Community sector organisation (registered Charity no. 283556) supporting adults with learning disabilities and autism. Over 70 individuals live within the Camphill community supported living accommodation and engage in daily creative workshops (arts, music, creativity focussed). The community prides itself on sustainability and caring for the community with them growing most of the food produce that supplies the onsite café and the residents' houses, baking breads and cakes in the onsite bakery.

Food production is undertaken with great consideration to the environment with organic principles followed such as no pesticides and utilising the no-dig method. The 20 onsite bee hives pollinate the plants and provide honey for the community.

### The Solar Project

It was identified that the significant roof space at Camphill could provide a platform for solar panels. With Camphill's ethos of working sustainably and in partnership with like-minded organisations, a partnership was established with Milton Keynes Community Energy (MKCE).

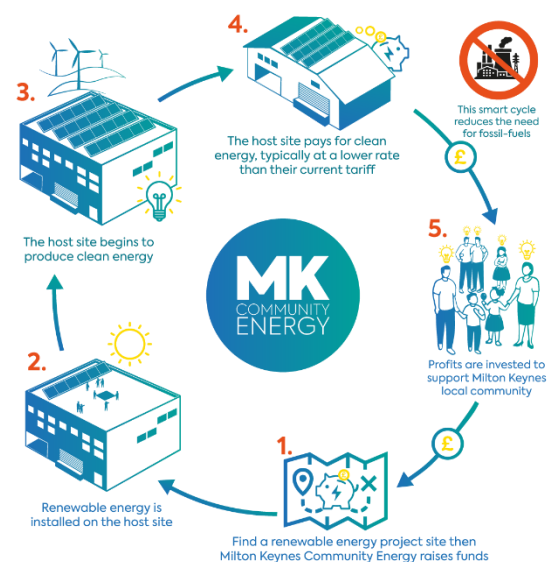
Over 150 solar panels were installed on the Chrysalis Theatre and on the roofs of some of the houses on the site in Willen Park in 2016. MK Community energy effectively leasing the roof space from Camphill in a long-term agreement.

### Benefits

MK Community Energy provide long-term community owned solar to Camphill MK, generating energy for the charity and a long-term income for MKCE. The income to MKCE is re-invested into Milton Keynes through their MK community home retrofit projects (e.g. Home Energy MK). These support retrofit programmes in the wider community that result in warmer homes, keeping households healthier and with lower energy bills and carbon emissions.

For Camphill MK, the benefit of working with MKCE resulted in no-capital/install costs and long term stable and predictable electricity prices. This has meant more core funds can be invested into the provision of care instead of utility bills, and the charity could demonstrate its green ethics, with clear and visible solar PV.

Over six years, a whopping 154,445kg of CO2 emissions have been avoided (25,700 kg on average per year). That's the equivalent of drinking 15,506,000 cups of tea or watching TV constantly for over 350 years from the sun's energy since installation. A fully grown tree absorbs 10-40kg per year, say average 25kg – our panels, the equivalent of ONE THOUSAND TREES every year.



## Photos

