



Environmental Sustainability: Making a Difference

Dr Philip Tamuno, FIEMA, & CEnv.

15 November 2024

In October 2020, the NHS became the world's first health service to commit to reaching carbon net zero, in response to the profound and growing threat to health posed by climate change.

The NHS logo is displayed in white, bold, italicized capital letters on a solid blue rectangular background.

NHS Sustainability & Climate Change

Health and Care Act 2022: Climate Change Duties

Net Zero by 2040 for the emissions the NHS directly controls

Net Zero by 2045 for the emissions that the NHS can influence

Adapt to the current and projected impacts of climate change

Respond to current and emerging environmental and climate emergencies

MAJOR EMISSIONS

CH₄

N₂O

SF₆

CO₂

CFC_s

PFC_s

HFC_s

SCOPE 1
DIRECT

SCOPE 2
INDIRECT

SCOPE 3
INDIRECT

TRAVEL
OUTSIDE GHGP
SCOPES

FOSSIL FUELS

NHS FACILITIES

ANAESTHETICS

NHS FLEET &
LEASED VEHICLES

ELECTRICITY

ENERGY
WELL-TO-TANK

BUSINESS TRAVEL
PUBLIC TRANSPORT
GREY FLEET, ETC.

WASTE

WATER

METERED DOSE
INHALERS

MEDICAL
DEVICES

MEDICINES

FREIGHT
TRANSPORT

BUSINESS
SERVICES

CONSTRUCTION

FOOD &
CATERING

COMMISSIONED HEALTH
SERVICES OUTSIDE NHS

MANUFACTURING
PRODUCTS, CHEMICALS, GASES

PATIENT,
VISITOR
TRAVEL

ICT

STAFF
COMMUTING

NHS CARBON
FOOTPRINT

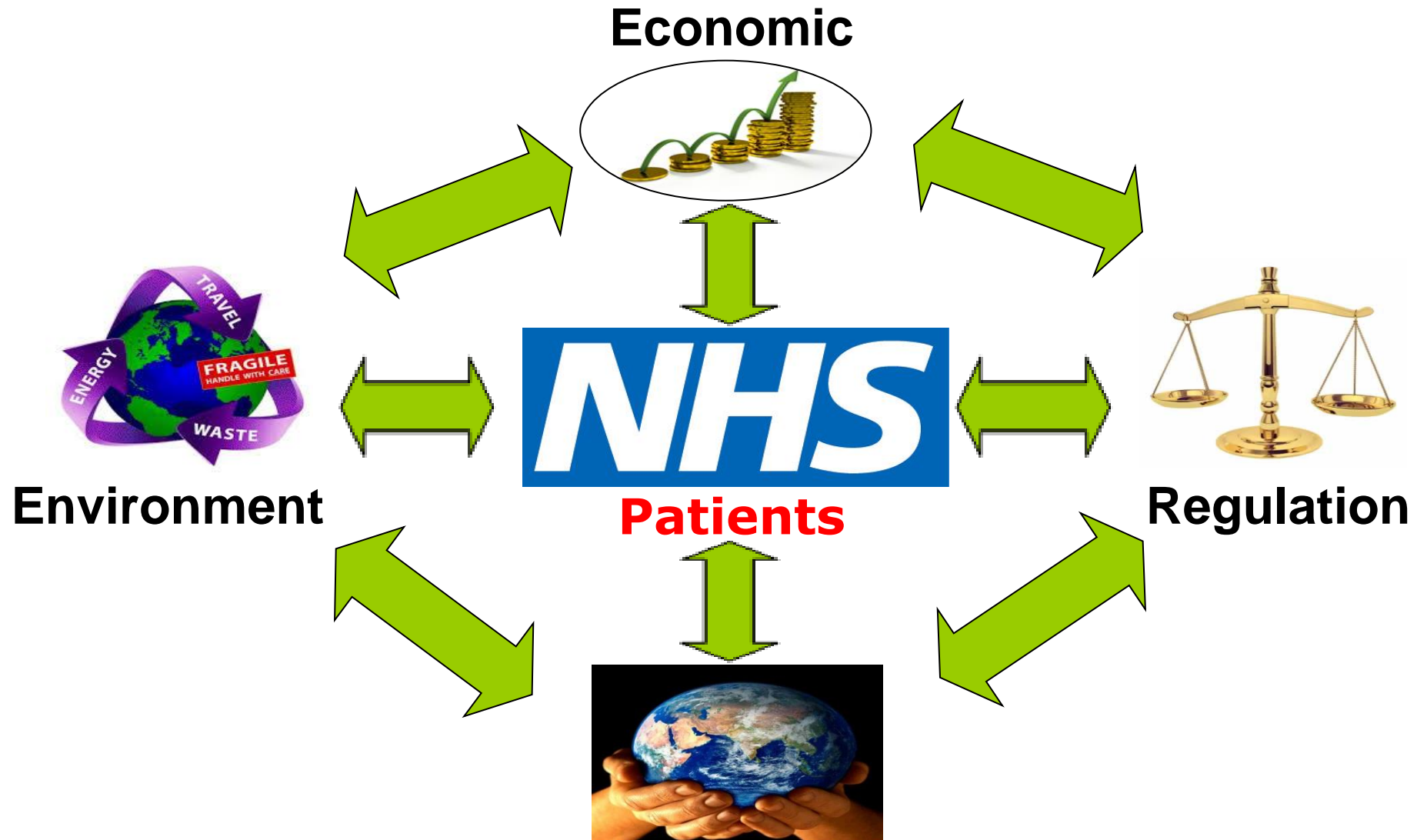
NHS CARBON
FOOTPRINT PLUS

Our Current Response & Approach





Facets of Sustainability



Our Responsibilities: Social Value

1. PREVENTION

Promoting health and preventing disease by tackling the causes of illnesses and inequalities

3. LEAN SERVICE DELIVERY

Streamlining care systems to minimise wasteful activities



2. PATIENT SELF-CARE

Empowering patients to take a greater role in managing their own health and healthcare

4. LOW CARBON ALTERNATIVES

Prioritising treatments and technologies with a lower environmental impact

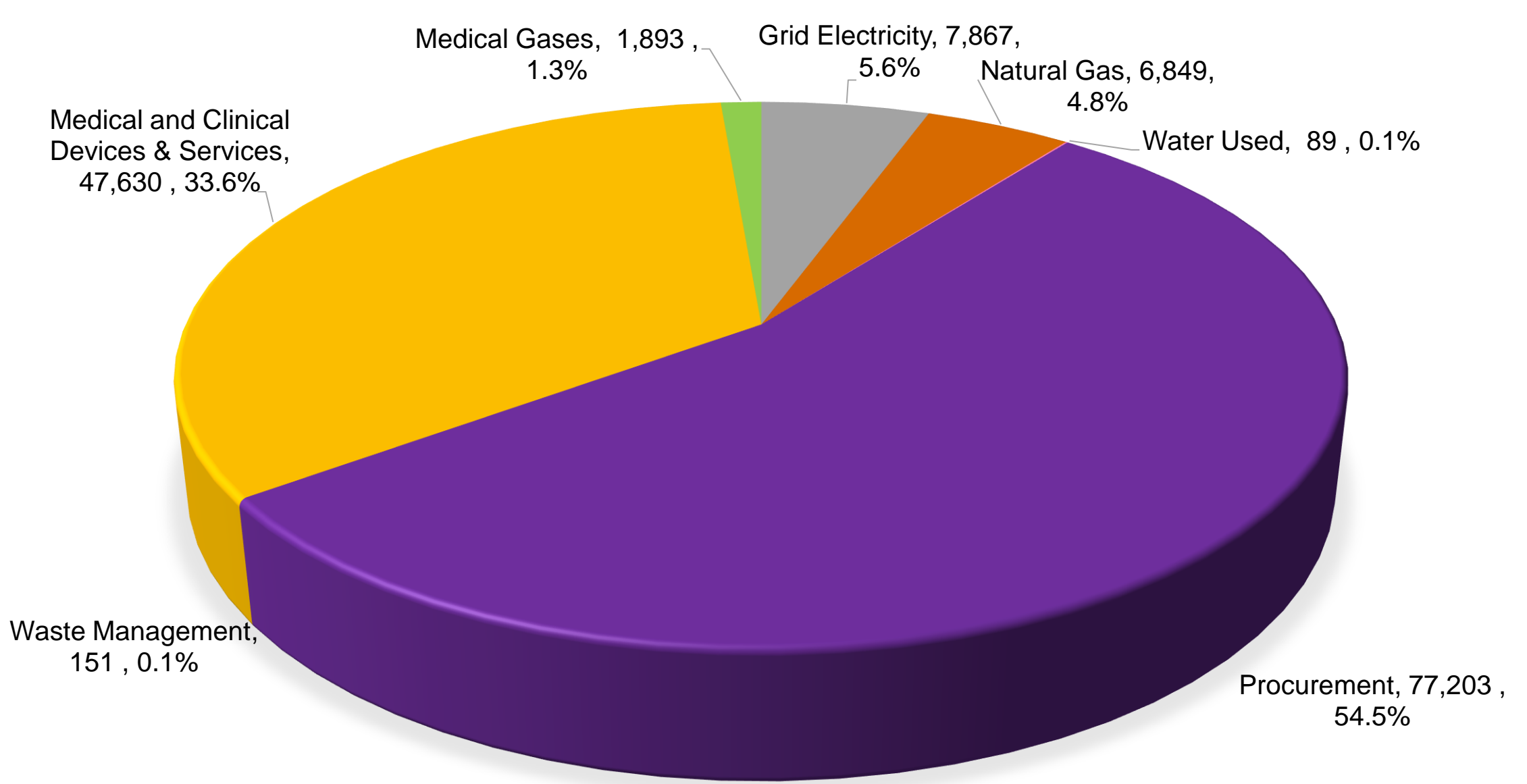
Our Green Plans

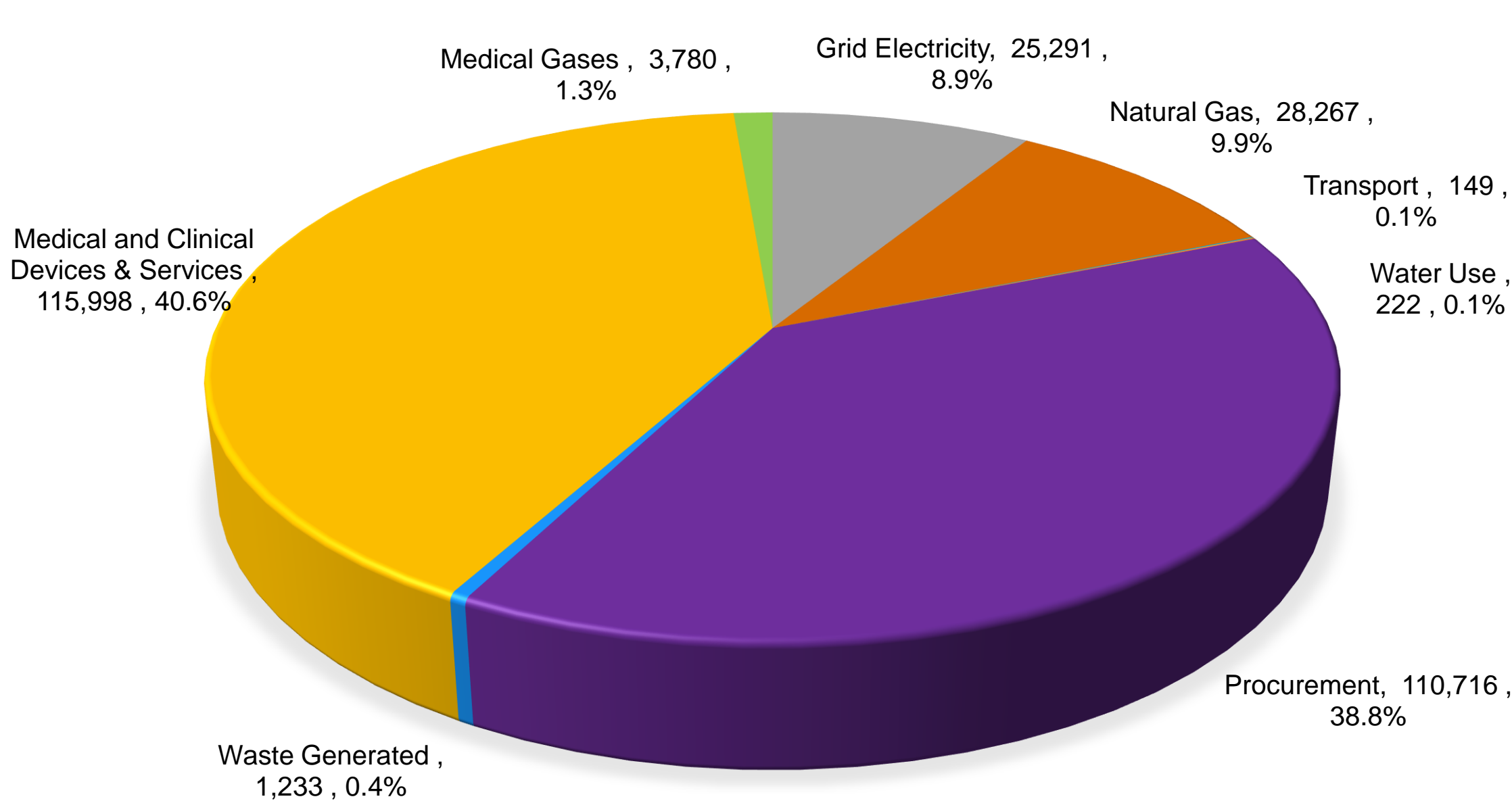
- Our Green Plans are one of our recent responses to the current environmental and climate change emergencies.
- This plan also demonstrates our commitment to play an active and leading role in the greener NHS agenda and supporting the delivery of the NHS net zero targets.



Our Green Plans

- To support the delivery of our green plan we have established joint sustainability team (Barts Health & BHRUT).
- This team is set-up for the purpose of optimising resources and expertise across both Trusts as we respond to the complex and emerging challenges associated with climate change and environmental degradation as well as to ensure that we continue to improve our environmental sustainability performances.





Joint Sustainability Team Deliverables

Subject Matter Expert: Environmental Sustainability

Coordinate the Implementation of the Green Plans

Coordinate and Provide Environmental Assurance

Promote and Coordinate Good Environmental Practices

Stakeholders and Interested Parties Engagement

Green Plan Implementation: Governance

Green Plan Delivery Oversight Group

Clinical Transformation Steering Green Group

Sustainable Travel & Air Quality Steering Green Group

Sustainable Procurement and Finance Steering Group

Estates and Facilities Management Steering Group

Barts Health NHS Trust: Green Groups

The Royal London and Mile End Green Group

St Bartholomew's Hospital Green Group

Newham University Hospital Green Group

Whipps Cross Hospital Green Group

Greener at Barts Health

BHRUT's Green Groups

- Queen's Hospital Green Group
- King George Hospital Green Group



CLINICAL
FELLOWSHIP
PROGRAMME



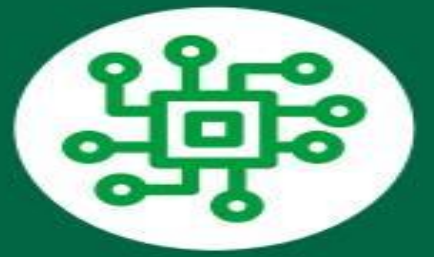
Leadership



Workforce



Sustainable
Models of Care



Digital



Travel &
Transport



Estates &
Facilities



Medicine



Procurement



Food &
Nutrition



Adaptation



Our role as
an anchor



**Barking, Havering and Redbridge
University Hospitals**
NHS Trust



Barts Health
NHS Trust



IEMA
**CORPORATE
PARTNER**

Embedding and Empowering: Sustainability

Environmental Sustainability Skills for the Workforce (1 Day)

Environmental Sustainability Skills for Managers (2 Days)

Foundation Certificate in Environmental Management (5 Days)

Introduction to Net Zero (2 Hours) & Pathway top Net Zero (2 Days)

Certificate in Environmental Management (15 Days)



Associate Member (AIEMA)

IEMA

Transforming the world
to sustainability



**Barking, Havering and Redbridge
University Hospitals**
NHS Trust

IEMA Transforming the world
to sustainability

Practitioner
membership



Barts Health
NHS Trust



TUTOR



**Barking, Havering and Redbridge
University Hospitals**

NHS Trust



**Green
Skills**



Barts Health
NHS Trust

Partnership for Environmental Sustainability

London Boroughs (Havering, Newham & Redbridge)

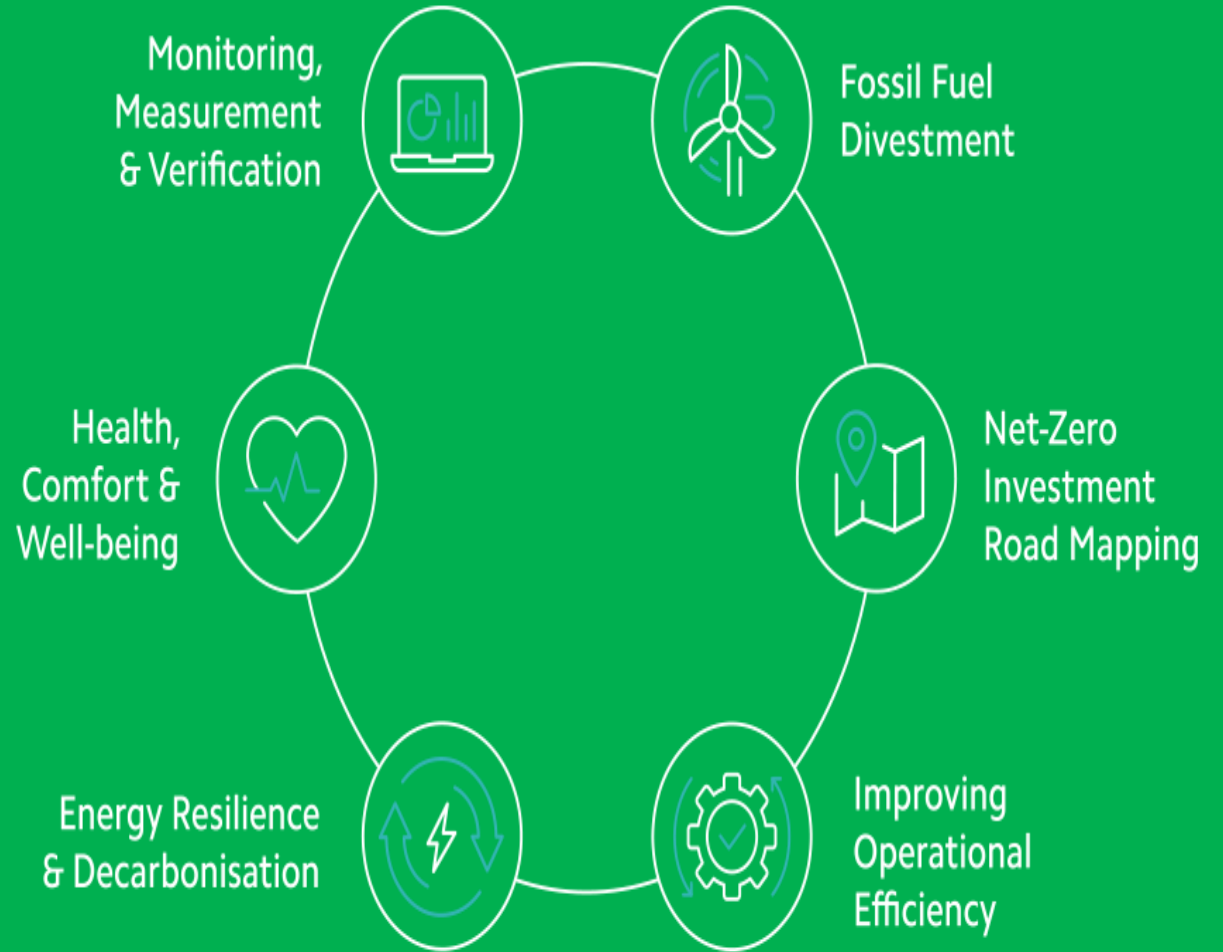
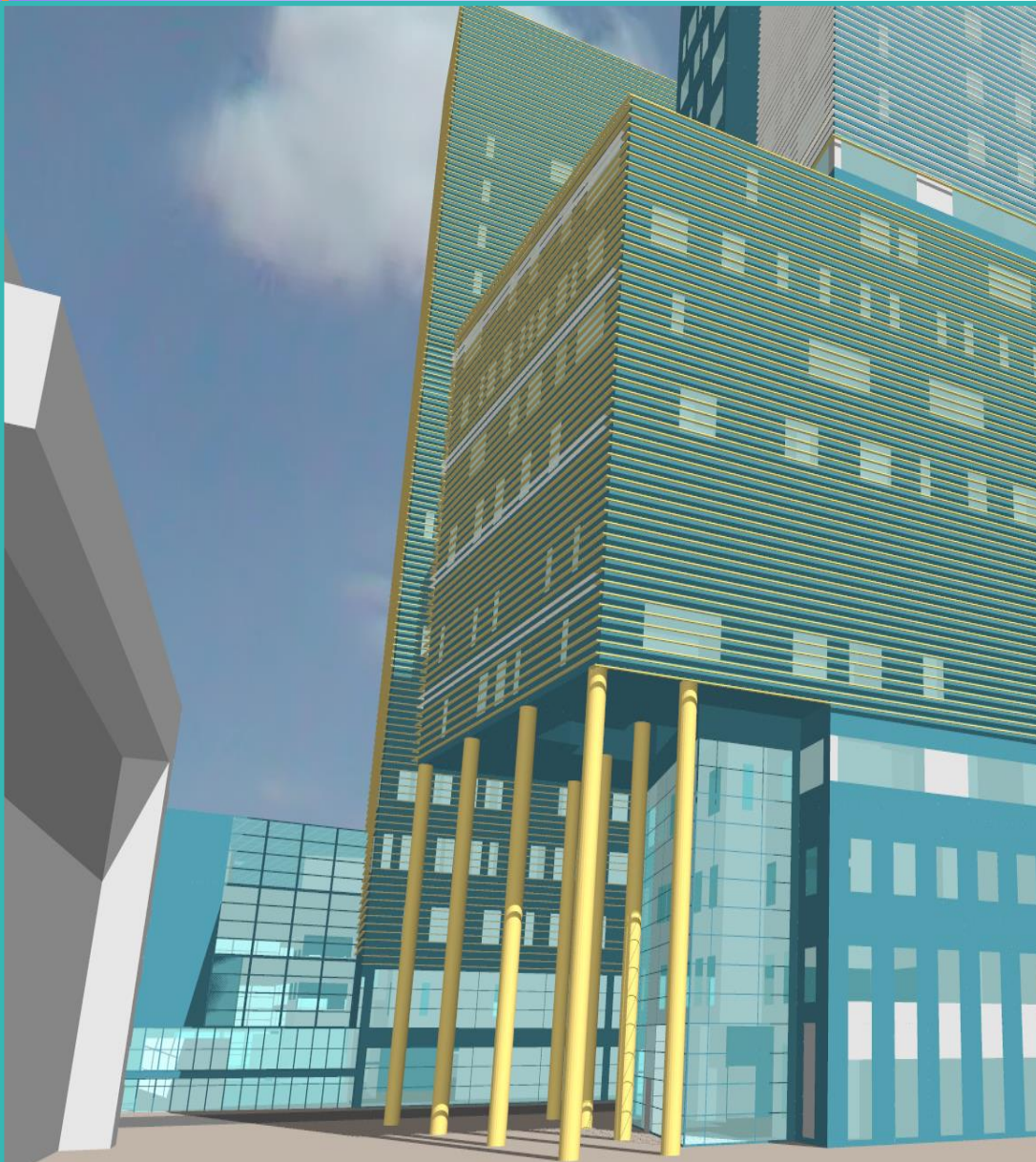
London Cycling Campaign

Global Action Campaign (GAP)

Sustrans & Brompton

London North-East Integrated Care System (NEL)

£0.7 million: Heat Decarbonisation Plan



£0.7 million: HDP & Digital Twin

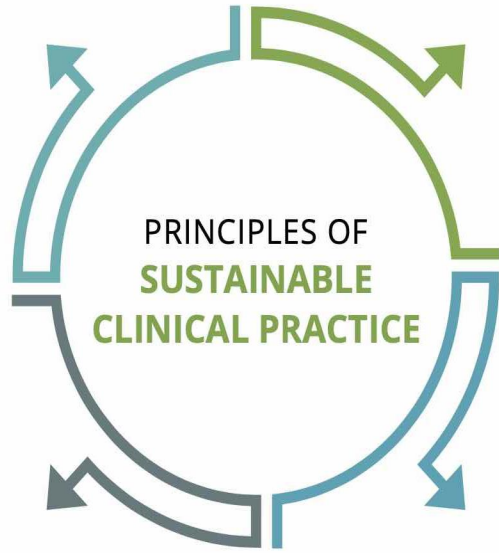


1. PREVENTION

Promoting health and preventing disease by tackling the causes of illnesses and inequalities

3. LEAN SERVICE DELIVERY

Streamlining care systems to minimise wasteful activities

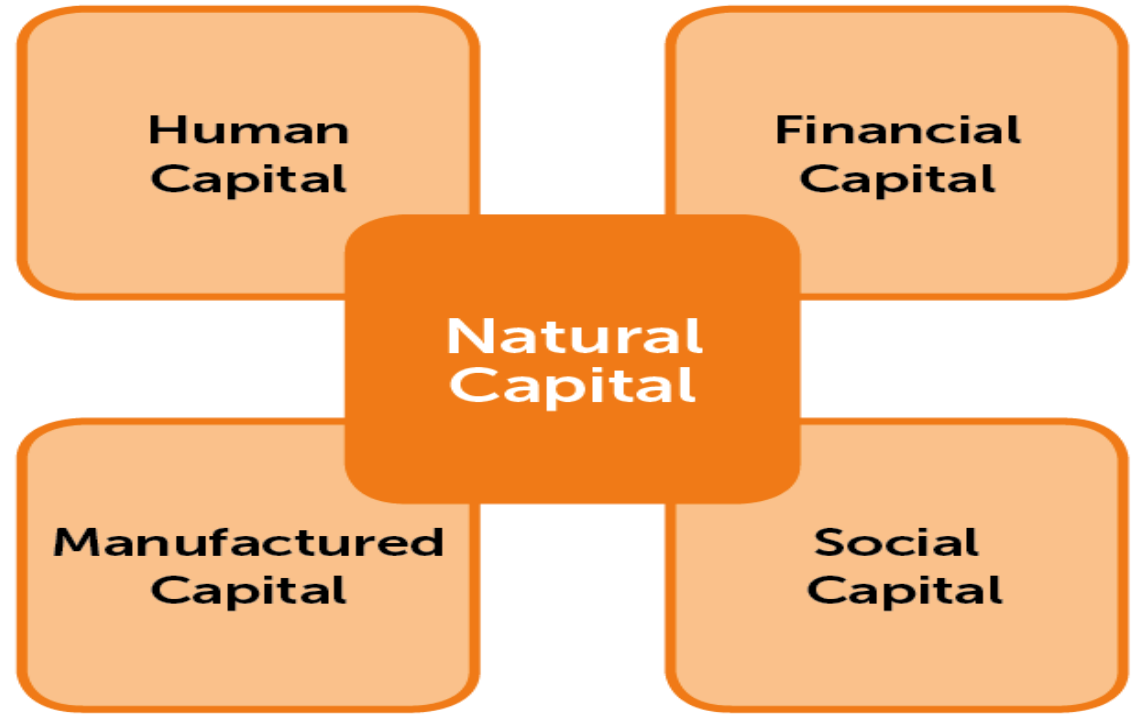


2. PATIENT SELF-CARE

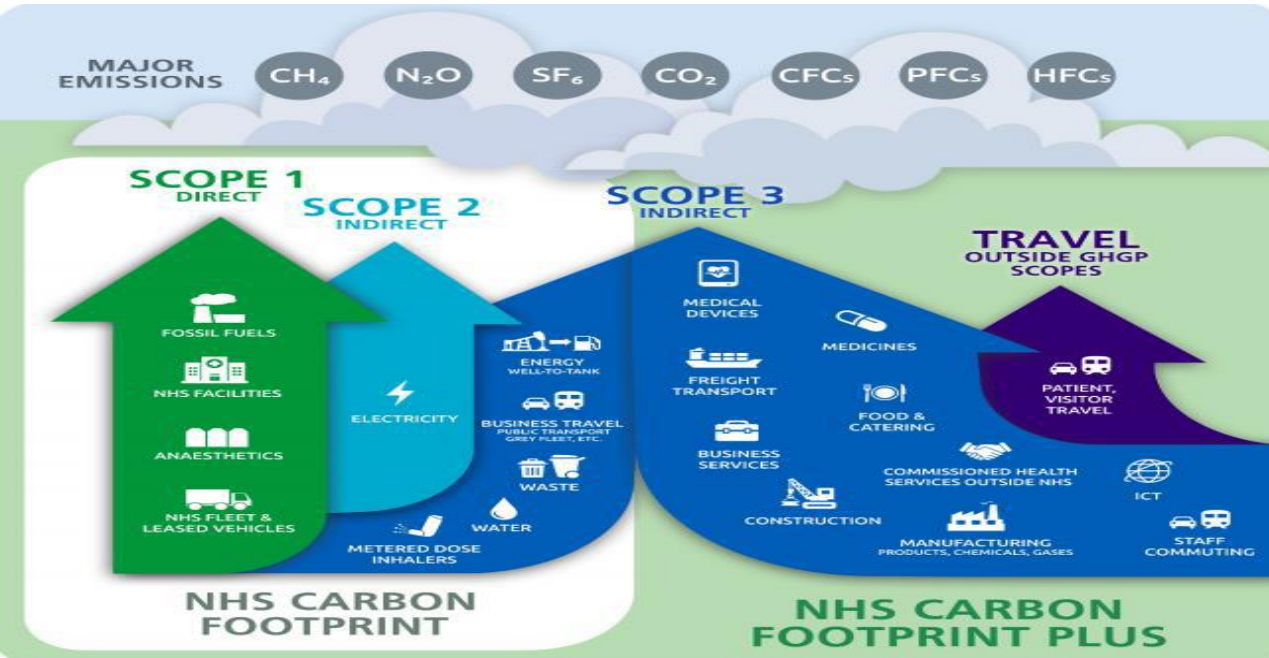
Empowering patients to take a greater role in managing their own health and healthcare

4. LOW CARBON ALTERNATIVES

Prioritising treatments and technologies with a lower environmental impact



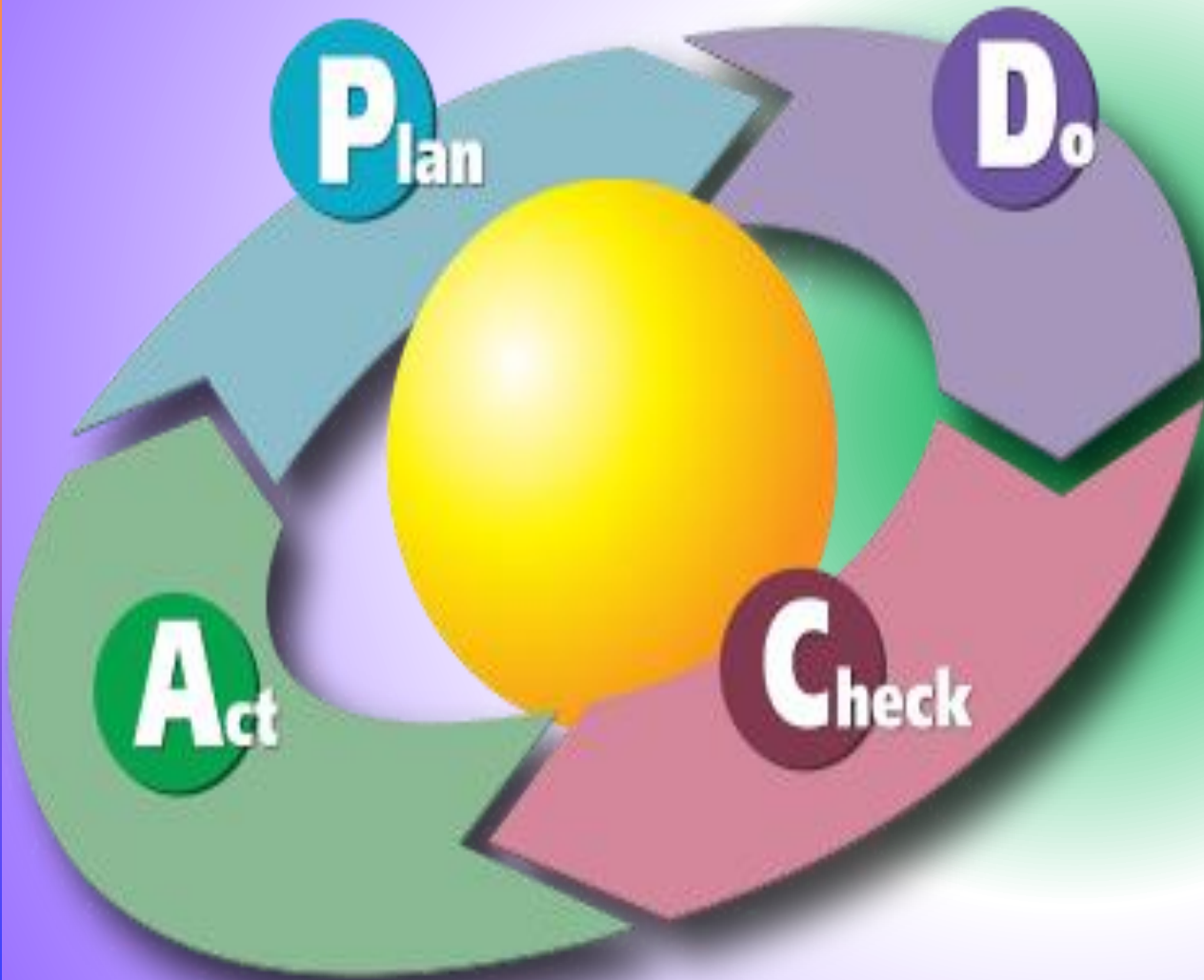
Mortimer, F. The Sustainable Physician. Clin Med 10(2). April 1, 2010. D110-111.



SUSTAINABLE DEVELOPMENT GOALS



Embedding Environmental Sustainability



Thank You

Dr Philip Tamuno, FIEMA, CEnv
Joint Head of Sustainability and Net Zero
Philip.Tamuno@nhs.net

